



contacta 



Window Intercom Systems

Enhance your customer service by aiding and improving your communication with customers



Contents

Complete Kits	Page
STS-K070 Dual Speaker Pod System	4
STS-K071 Speaker and Microphone Pod System	5
STS-K072 Screen Mounted Microphone System	6
STS-K073 Dual Loudspeaker Pod System	7
STS-K001 Bridge Bar System	8
STS-K002 Surface Mounted System	9
STS-K003 Flush Mounted System	10
STS-K009-IP-L-B Surface Mounted Call System.....	11
STS-K020 Retrofit Glass Mounted System	12
STS-K021 Window Mounted System (Non Ballistic Rated)	13
STS-K022 Window Mounted System (Level 3 Ballistic Rated)	14
STS-K023 Window Mounted System (Level 8 Ballistic Rated)	15
STS-K035 Curved Microphone System	16
STS-K058 Bent Microphone System	17
STS-K060 Stainless Bridge Bar System	18
STS-K064 Overhead Speaker & Anti-Vandal Microphone System	19
STS-K080-IP, IP54 Speaker and Microphone System	20
STS-SS Integrated System	21

Components

STS-A31H Window Intercom Amplifier.....	22
-----------------------------------------	----

Combined Microphone and Speaker Units

STS-SU1-3W Staff Unit.....	23
STS-SU1-3W-SIL-400 Staff Unit	23
STS-SU2 Staff Loudspeaker Pod.....	24
STS-BL0 Customer Speaker and Microphone (Non Ballistic Rated)	24
STS-BL3 Customer Speaker and Microphone (Level 3 Ballistic Rated)	25
STS-BL8 Customer Speaker and Microphone (Level 8 Ballistic Rated)	25
STS-B80 Bridge Bar Customer Unit.....	26
STS-B90 Slimline Bridge Bar Unit.....	26
STS-B94 Half Bridge Bar Unit.....	27
STS-K009-CB Call Box	27

Microphones

STS-M14-000-SS Window Mounted Microphone	28
STS-M14-BENT Window Mounted Microphone with Bent Stem	28
STS-M14-300 Window Mounted Microphone with Stem	29
STS-M14-300-EX Microphone Stem Extender	29
MIC-M15-300-IP Stem Microphone	30
MIC-M300 Staff Gooseneck Microphone.....	30
STS-M54 Surface Mounted Microphone.....	31
STS-M56 Flush Mounted Microphone.....	31
STS-M56-B-NG Integrated Customer Microphone	32
STS-C100/STS-C200 Window Mounted Microphone with Poly Plates	32

Components	Page
Speakers	
STS-S23-BRKT Single Clamp Bracket for the STS-S23 Speaker	33
STS-S23-BRKT-C Dual Clamp Bracket for the STS-S23 Speaker	33
STS-S23 Overhead Speaker Module.....	34
STS-S60 Surface Mounted Speaker	34
STS-S61 Flush Mounted Speaker	35
STS-S61-B-NG Integrated Customer Speaker	35
STS-S70 Speaker Pod.....	36
STS-S80-IP, IP54 Rate Overhead Speaker	36
Hearing Loop Aerials	
IL-AE97 Hearing Loop Sign with Built-In Aerial.....	37
IL-AE98 Window Mounted Loop Aerial.....	37
IL-AE99 Under the Counter Hearing Loop Aerial.....	38
Accessories	
STS-EX Extension Cables	38
STS-SJB Break Out Box.....	39
HEADSET-1-RJ11/HEADSET-1-3.5MM Wired Headset	40
HEADSET-2-RJ11/HEADSET-2-3.5MM Wired Headset	40
HEADSET-1-DECT Wireless Headset	41
HEADSET-2-DECT Wireless Headset	41
PS-55 Power Supply.....	42



STS-K070

Dual Speaker Pod System

The STS-K070 Window Intercom System is an entry level kit that provides high quality sound across partitions and safety screens, featuring a speaker pod and mouse microphone for both the staff and customer sides. It’s an affordable system suitable for environments with low ambient noise.

Kit Includes

- STS-A31H Window Intercom Amplifier
- STS-M70 Mouse Microphone x2
- STS-S70 Speaker Pod x2
- PS-55 Power Supply

Optional Accessories

- IL-AE99 Under the Counter Hearing Loop Aerial

Applications

For use where one to one communication is impaired by glass, such as:

- Nursing or Retirement Homes
- Hospitals
- Reception Counters
- Banks
- Retail Stores

Physical Data

Dimensions (boxed)	Height – 12.20” Width – 12.20” Depth – 6.20”
Weight	2.6lbs
Construction	ABS Plastic
Finish	Black RAL 9005

Ambient Noise Suitability

Low



STS-K071

Speaker and Microphone Unit Pod System

The STS-K071 Window Intercom System is an entry level kit that provides high quality sound across partitions and safety screens, featuring a customer speaker pod and mouse microphone. For the staff side, a combined speaker and microphone staff unit is included making the system suitable for environments with moderate ambient noise.

Includes

- STS-A31H Window Intercom Amplifier
- STS-M70 Mouse Microphone
- STS-S70 Speaker Pod
- STS-SU2 Staff Unit
- PS-55 Power Supply

Optional Accessories

- IL-AE99 Under the Counter Hearing Loop Aerial

Applications

For use where one to one communication is impaired by glass, such as:

- Nursing or Retirement Homes
- Hospitals
- Reception Counters
- Banks
- Retail Stores

Physical Data

Dimensions (boxed)	Height – 12.20" Width – 12.20" Depth – 6.20"
Weight	3.0lbs
Construction	ABS Plastic
Finish	Black RAL 9005

Ambient Noise Suitability

Moderate



STS-K072

Screen Mounted Microphone System

The STS-K072 Window Intercom System is entry level kit that provides high quality sound across partitions and safety screens. The kit features a customer speaker pod and screen mounted microphone and a combined speaker and microphone staff unit. It is an affordable system suitable for environments with high ambient noise.

Includes

- STS-A31H Window Intercom Amplifier
- STS-M14-BENT Microphone
- STS-S70 Speaker Pod
- STS-SU2 Staff Unit
- PS-55 Power Supply

Optional Accessories

- IL-AE99 Under the Counter Hearing Loop Aerial

Applications

For use where one to one communication is impaired by glass, such as:

- Nursing or Retirement Homes
- Hospitals
- Reception Counters
- Banks
- Retail Stores

Physical Data

Dimensions (boxed)	Height – 12.20" Width – 12.20" Depth – 6.20"
Weight	3.4lbs
Construction	ABS Plastic
Finish	Black RAL 9005

Ambient Noise Suitability

High



STS-K073

Dual Loudspeaker Pod System

The STS-K073 Window Intercom System is an entry level kit that provides high quality sound across partitions and safety glass. The kit features two STS-SU2 combined speaker and microphone units, one for the staff and one for customer. The STS-SU2's can be free standing or surface mounted.

Includes

- STS-A31H Window Intercom Amplifier
- STS-SU2 Staff Unit x2
- PS-55 Power Supply

Physical Data

Dimensions (boxed)	Height – 12.20" Width – 12.20" Depth – 6.20"
Construction	ABS Plastic
Finish	Black RAL 9005

Optional Accessories

- IL-AE99 Under the Counter Hearing Loop Aerial

Applications

For use where one to one communication is impaired by glass, such as:

- Nursing or Retirement Homes
- Hospitals
- Reception Counters
- Banks
- Retail Stores

Ambient Noise Suitability

High



STS-K001

Bridge Bar System

The STS-K001 Window Intercom System features the STS-B80 Bridge Bar Customer Unit with a central microphone and speakers on either side. For the staff, the STS-SU1-3W combined microphone and speaker unit has an adjustable neck and features a three way mute switch. The kit comes with an IL-AE99 under the counter hearing loop aerial.

Includes

- STS-A31H Window Intercom Amplifier
- STS-B80 Bridge Bar Customer Unit
- STS-SU1-3W Staff Unit
- PS-55 Power Supply
- IL-AE99 Under the Counter Hearing Loop Aerial

Applications

For use where one to one communication is impaired by glass, such as:

- Banks
- Post Offices
- Theaters
- Information Centers
- Public Transit Systems
- Ticket Counters
- Embassies
- Government Buildings

Physical Data

Dimensions (boxed)	Height – 4.63" Width – 25.50" Depth – 13.06"
Weight (boxed)	8.0lbs
Construction	Mild Steel
	ABS Plastic
Finish	Grey Leatherette
	Black Textured

Product Codes

Bridge Bar Kit in Grey	STS-K001-G
Bridge Bar Kit in Black	STS-K001-B

Ambient Noise Suitability

High



STS-K002

Surface Mounted System

The STS-K002 Window Intercom System features customer side surface mount speaker and microphone units. For the staff, the STS-SU1-3W combined microphone and speaker unit has an adjustable neck and features a three way mute switch. The kit comes with an IL-AE99 under the counter hearing loop aerial.

Includes

- STS-A31H Window Intercom Amplifier
- STS-S60 Surface Mounted Speaker
- STS-M54 Surface Mounted Microphone
- STS-SU1-3W Staff Unit
- PS-55 Power Supply
- IL-AE99 Under the Counter Hearing Loop Aerial

Physical Data

Dimensions (boxed)	Height – 5.12"
	Width – 13.39"
Weight (boxed)	Depth – 9.45"
	5.42lbs
Construction	Mild Steel
	ABS Plastic
Finish	Grey Leatherette
	Black Textured

Applications

For use where one to one communication is impaired by glass, such as:

- Banks
- Post Offices
- Theaters
- Information Centers
- Ticket Counters
- Embassies
- Government Buildings

Product Codes

Surface Mounted Kit in Grey	STS-K002-G
Surface Mounted Kit in Black	STS-K002-B

Ambient Noise Suitability

Moderate



STS-K003

Flush Mounted System

The STS-K003 Window Intercom System features customer flush mount speaker and microphone units that can be installed into the counter or nearby vertical surface. They prevent tampering in high-risk environments such as banks and prisons. For the staff, the STS-SU1-3W combined microphone and speaker unit has an adjustable neck and features a three way mute switch. The kit comes with an IL-AE99 under the counter hearing loop aerial.

Includes

- STS-A31H Window Intercom Amplifier
- STS-S61 Flush Mounted Speaker
- STS-M56 Flush Mounted Microphone
- STS-SU1-3W Staff Unit
- PS-55 Power Supply
- IL-AE99 Under the Counter Hearing Loop Aerial

Applications

For use where one to one communication is impaired by glass, such as:

- Banks
- Post Offices
- Correctional Facilities
- Ticket Counters
- Embassies
- Government Buildings

Physical Data

Dimensions (boxed)	Height – 5.12” Width – 13.39” Depth – 9.45”
Weight (boxed)	5.29lbs
Construction	Mild Steel ABS Plastic
Finish	Grey Leatherette Black Textured

Product Codes

Flush Mounted Kit in Grey	STS-K003-G
Flush Mounted Kit in Black	STS-K003-B

Ambient Noise Suitability

Moderate



STS-K009-IP-L-B

IP55 Surface Mounted Call System

The STS-K009-IP-L-B Window Intercom System features a customer IP55 weather rated outdoor Call Unit. It is ideal for locations such as parking lots, gated entrances and doorways, delivery points and other open-air applications. The IP55 rating ensures protection against water, dust, and dirt ingress. For the staff, the STS-SU1-3W combined microphone and speaker unit has an adjustable neck and features a three way mute switch. The kit comes with an IL-AE99 under the counter hearing loop aerial.

Includes

- STS-A31H Window Intercom Amplifier
- K009-IP Surface Mounted Call Unit
- STS-SU1-3W Staff Unit
- PS-55 Power Supply
- IL-AE99 Under the Counter Hearing Loop Aerial

Applications

For use outdoors in venues such as:

- Outdoor access points
- Transport and distribution stations
- Ports and ferry terminals
- Parking Garages
- Medical facilities
- Drive through services (food, banking, retail)

Physical Data

Dimensions (boxed)	Height – 4.00" Width – 12.88" Depth – 9.63"
Weight	7.4lbs
Construction	Mixed
Finish	Black Powder Coated Leatherette

Ambient Noise Suitability

Moderate



STS-K020-S23

Window Mounted System

The STS-K020 Window Intercom System is specifically designed to retrofit into a glass window where an existing system has left a hole in the glass. The glass mounted customer microphone is attached with two polycarbonate plates. The kit comes with the STS-S23 overhead customer speaker, STS-SU1-3W combined microphone and speaker unit for the staff and a glass mounted hearing loop aerial and sign.

Includes

- STS-A31H Window Intercom Amplifier
- STS-S23 Surface Mounted Overhead Speaker
- STS-C100 Glass Mounted Microphone Kit
- STS-SU1-3W Staff Unit
- PS-55 Power Supply
- IL-AE98 Window Mounted Hearing Loop Aerial

Applications

For use where one to one communication is impaired by glass, such as:

- Banks
- Public Transit Systems
- Police Departments
- Ticket Counters
- Embassies
- Government Buildings

Ambient Noise Suitability

High

Physical Data

Dimensions (boxed)	Height – 5.00” Width – 13.50” Depth – 9.50”
Weight (boxed)	6.4lbs
Construction	Mild Steel ABS Plastic
Finish	Grey Leatherette Grey Semi Gloss Black Textured

Product Codes

Retrofit Kit to accomodate 4” hole	STS-K020-S23
Retrofit Kit to accomodate 5” hole	STS-K020-S23-6



STS-K021

Window Mounted System (Non Ballistic Rated)

The STS-K021 Window Intercom System provides clear communication for applications where there is a hole in the glass. This robust system overcomes communication barriers caused by glass, security screens or similar partitions. The kit features a STS-BL0, a non ballistic rated glass mounted, all-in-one speaker and microphone customer unit. It allows for simple installation and ensures both the customer and staff can be clearly heard.

Includes

- STS-A31H Window Intercom Amplifier
- STS-SU1-3W-SIL-400 Staff Unit
- STS-BL0 Customer side speaker and microphone
- PS-55 Power Supply
- IL-AE98 Window Mounted Hearing Loop Aerial

Physical Data

Dimensions (boxed)	Height – 5.90" Width – 20.40" Depth – 12.50"
Construction	Mixed
Finish	Powder Coated Silver Sparkle

Applications

For use outdoors in venues such as:

- Banks
- Public Transit Systems
- Embassies
- Government Buildings
- Theatres
- Information Centers

Ambient Noise Suitability

Moderate



STS-K022

Window Mounted System (Level 3 Ballistic Rated)

The STS-K022 Window Intercom System provides clear communication in secure environments. Designed for applications where there is a hole in the glass, this robust system overcomes communication barriers caused by glass, security screens or similar partitions. The kit features a Level 3 Ballistic rated STS-BL3, a glass mounted, all-in-one speaker and microphone customer unit. It ensures protection and seamless interactions in high security environments.

Includes

- STS-A31H Window Intercom Amplifier
- STS-SU1-3W-SIL-400 Staff Unit
- STS-BL3 Customer side speaker and microphone
- PS-55 Power Supply
- IL-AE98 Window Mounted Hearing Loop Aerial

Physical Data

Dimensions (boxed)	Height – 5.90" Width – 20.40" Depth – 12.50"
Construction	Mixed
Finish	Powder Coated Silver Sparkle

Applications

For use outdoors in venues such as:

- Banks
- Public Transit Systems
- Embassies
- Government Buildings
- Theatres
- Information Centers

Standards

- Level 3 UL 752 Ballistic Rated

Ambient Noise Suitability

Moderate



STS-K023

Window Mounted System (Level 8 Ballistic Rated)

The STS-K023 Window Intercom System provides clear communication in secure environments. Designed for applications where there is a hole in the glass, this robust system overcomes communication barriers caused by glass, security screens or similar partitions. The kit features a Level 8 Ballistic rated STS-BL8, a glass mounted, all-in-one speaker and microphone customer unit. It ensures protection and seamless interactions in high security environments.

Includes

- STS-A31H Window Intercom Amplifier
- STS-SU1-3W-SIL-400 Staff Unit
- STS-BL8 Customer side speaker and microphone
- PS-55 Power Supply
- IL-AE98 Window Mounted Hearing Loop Aerial

Physical Data

Dimensions (boxed)	Height – 5.90" Width – 20.40" Depth – 12.50"
Construction	Mixed
Finish	Powder Coated Silver Sparkle

Applications

For use outdoors in venues such as:

- Banks
- Public Transit Systems
- Embassies
- Government Buildings
- Theatres
- Information Centers

Standards

- Level 8 UL 752 Ballistic Rated

Ambient Noise Suitability

Moderate



STS-K035

Curved Microphone System

The STS-K035 Window Intercom System features a Half Bridge Bar customer speaker and microphone unit that can be positioned to the left or right of a pass through tray. For the staff, the STS-SU1-3W combined microphone and speaker unit has an adjustable neck and features a three way mute switch. The kit comes with an IL-AE99 under the counter hearing loop aerial.

Includes

- STS-A31H Window Intercom Amplifier
- STS-B94 (LH/RH) Half Bridge Bar Unit
- STS-SU1-3W Staff Unit
- PS-55 Power Supply
- IL-AE99 Under the Counter Hearing Loop Aerial

Applications

For use where one to one communication is impaired by glass, such as:

- Banks
- Post Offices
- Theaters
- Information Centers
- Ticket Counters
- Embassies
- Government Buildings

Physical Data

Dimensions (boxed)	Height – 6.30” Width – 12.20” Depth – 11.81”
Weight (boxed)	5.78lbs
Construction	Mild Steel
	ABS Plastic
Finish	Grey Leatherette
	Black Textured

Product Codes

Curved Left Microphone Kit in Black	STS-K035-LH-B
Curved Left Microphone Kit in Grey	STS-K035-LH-G
Curved Right Microphone Kit in Black	STS-K035-RH-B
Curved Right Microphone Kit in Grey	STS-K035-RH-G



STS-K058

Bent Microphone System

The STS-K058 Window Intercom System kit includes the customer STS-S60 Surface Mounted Speaker unit and the STS-M14-BENT Window Mounted Microphone with attached curved tubing. For the staff, the STS-SU1-3W combined microphone and speaker unit has an adjustable neck and features a three way mute switch. The kit comes with an IL-AE99 under the counter hearing loop aerial.

Includes

- STS-A31H Window Intercom Amplifier
- STS-S60 Surface Mounted Speaker
- STS-M14 BENT-G Customer Window Mounted Microphone with Curved Tubing
- STS-SU1-3W Staff Unit
- PS-55 Power Supply
- IL-AE99 Under the Counter Hearing Loop Aerial

Physical Data

Dimensions (boxed)	Height – 6.30" Width – 12.20" Depth – 11.81"
Weight (boxed)	5.51lbs
Construction	Mild Steel
	ABS Plastic
Finish	Grey Leatherette
	Black Textured

Applications

For use where one to one communication is impaired by glass, such as:

- Banks
- Post Offices
- Theaters
- Information Centers
- Public Transit Systems
- Ticket Counters
- Embassies
- Government Buildings

Ambient Noise Suitability

High



STS-K060

Stainless Bridge Bar Kit

The STS-K060 Window Intercom System features the customer STS-S90-SS Stainless Bridge Bar Unit with a glass-mounted microphone and speaker pods. The STS-SU1-3W-SS combined microphone and speaker unit for the staff is provided in a stainless steel finish to give the kit a sleek modern look. The kit comes with an IL-AE99 under the counter hearing loop aerial.

Includes

- STS-A31H Window Intercom Amplifier
- STS-B90-SS Slimline Bridge Bar Unit
- STS-SU1-3W-SS Staff Unit
- PS-55 Power Supply
- IL-AE99 Under the Counter Hearing Loop Aerial

Physical Data

Dimensions (boxed)	Height – 4.63” Width – 25.50” Depth – 18.06”
Weight (boxed)	9.37lbs
Construction	Mild Steel ABS Plastic
Finish	Stainless Steel

Applications

For use where one to one communication is impaired by glass, such as:

- Banks
- Post Offices
- Theaters
- Information Centers
- Public Transit Systems
- Ticket Counters
- Embassies
- Government Buildings

Ambient Noise Suitability

High



STS-K064
Overhead Speaker and Window Mounted Microphone System

The STS-K064 Window Intercom System features an overhead speaker and window mounted microphone for the customer side, along with the STS-SU1-3W combined microphone and speaker unit that has an adjustable neck and features a three way mute switch. The kit comes with an IL-AE99 under the counter hearing loop aerial.

Includes

- STS-A31H Window Intercom Amplifier
- STS-M14-300 Window Mounted Microphone
- STS_SU1-3W Staff Unit
- STS-S23 Overhead Speaker
- PS-55 Power Supply
- IL-AE99 Under the Counter Hearing Loop Aerial

Physical Data

Dimensions (boxed)	Height – 5.11"
	Width – 14.96"
Weight	Depth – 12.59"
	6.0lbs
Construction	Stainless Steel
	Mild Steel
	ABS Plastic
Finish	Grey Leatherette
	RAL 9006 Powder Coated Semi Gloss
	Black Textured

Applications

For use where one to one communication is impaired by glass, such as:

- Banks
- Post Offices
- Information Centers
- Airports
- Supermarkets/Checkouts
- Pharmacies

Ambient Noise Suitability

High



STS-K080-IP

IP54 Speaker and Microphone System

The STS-K080-IP Window Intercom System features an IP54 STS-S80-IP overhead speaker and an IP54 rated stem microphone for the customer side. The IP54 rating ensures protection against water, dust, and dirt ingress making it suitable for outdoor applications. For the staff, the STS-SU1-3W combined microphone and speaker unit has an adjustable neck and features a three way mute switch. The kit comes with an IL-AE99 under the counter hearing loop aerial.

Includes

- STS-A31H Window Intercom Amplifier
- STS-M15-300-IP54 Stem Microphone
- STS_SU1-3W-B Staff Unit
- STS-S80-IP54 Overhead Speaker
- PS-55 Power Supply
- IL-AE99 Under the Counter Hearing Loop Aerial

Applications

For use outdoors in venues such as:

- Outdoor access points
- Transport and distribution stations
- Ports and ferry terminals
- Security Doors
- Mass Testing Facilities
- Drive through services (food, banking, retail)

Physical Data

Dimensions (boxed)	Height – 4.72” Width – 25.19” Depth – 13.38”
Weight	7.4lbs
Construction	Stainless Steel
	Mild Steel
	ABS Plastic
Finish	Matt Black
	Black Powder Coated
	Black Textured

Ambient Noise Suitability

High



STS-SS

Integrated Window Intercom System for Deal Tray Drawers

The STS-SS Window Intercom System is designed for integration into deal drawers, deal trays, frames and similar applications. The kit features an integrateable customer microphone and speaker with mounting plates and a free standing staff speaker and microphone unit with a dual mute switch.

Includes

- STS-A31H Window Intercom Amplifier
- STS_SUI-3W Staff Unit
- STS-S61-B-NG Customer Side Integrated Speaker
- STS-M56-B-NG Customer Side Integrated Microphone
- PS-55 Power Supply

Physical Data

Dimensions (boxed)	Height – 6.25" Width – 12.13" Depth – 12.38"
Weight	5.0lbs
Construction	Mixed
	ABS Plastic
Finish	Powder Coated Black or Grey
	Black Textured

Applications

For use in integrated applications like deal drawers, deal trays and frames where high quality transmission is required in venues such as:

- Pharmacies
- Prisons
- Medical Dispensaries
- Government Buildings and Embassies

Product Codes

Integrated Kit in Black	STS-SS-B
Integrated Kit in Grey	STS-SS-G



STS-A31H

Window Intercom Amplifier

The STS-A31H is an all-in-one Hearing Loop and Duplex Amplifier specifically designed for all kits in the Window Intercom product range .

Features

- Energy-saving "green" standby mode is automatically used, achieving a power saving of up to 80%
- Constant current hearing loop drive (with installer adjustable hearing loop drive level)
- Continuous self-testing means that no specialized equipment is required to confirm functionality
- Power and status indication: Green/Red LED column indicator aids adjustments and indicates power and status
- DC Power: 2.1mm DC jack

Physical Data

Dimensions	Height – 1.58" Width – 4.58" Depth – 4.50"
Weight	0.32lbs
Construction	ABS Plastic Construction Housing
Finish	Matt Black Fine Texture

Accessory

- PS-55 Power Supply (page 42)

Technical Data

Supply Voltage	12-14 VDC
Quiescent Current	100mA typical
Operating Current	2A typical on speech peaks
Power Switch	Push on - push off (tact switch under membrane)
Microphones	Electret, supply 5V via 2.2K Ω load resistor
Speaker Output Power	RMS: 2.5W / 8 Ω , 4.4W / 4 Ω
Loop Drive Compliance	Constant current, bounded by 4Vrms & 3Arms
Total Harmonic Distortion	<5% (loop and speakers)

STS-SU1-3W

Staff Unit

The combined microphone and speaker unit that has an adjustable neck and features a three way mute switch.

Technical Data

Speaker	RMS	5W
	Impedance	4Ω
	Output	SPL 1W @ 1M 85dB
	Frequency Response	150Hz - 10300Hz
Microphone	Directional Response	Cardioid
	Frequency Response	150Hz - 10500Hz
	Sensitivity	49.5dB+ 2dB @ 1kHz (0dB=1V/pa)
	Impedance	1.6KΩ+ 3-% @ 1kHz

Product Codes

Staff Unit in Grey	STS-SU1-3W-G
Staff Unit in Black	STS-SU1-3W-B



Physical Data

Dimensions	Height – 14.50” Width – 3.80” Depth – 6.05”
Weight	1.79lbs
Construction	Mild Steel
Finish	Grey Leatherette Black Textured

STS-SU1-3W-SIL-400

Staff Unit

The combined microphone and speaker unit features a 15.75” adjustable gooseneck and three way mute switch.

Technical Data

Speaker	RMS	5W
	Impedance	4Ω
	Output	SPL 1W @ 1M 85dB
	Frequency Response	150Hz - 10300Hz
Microphone	Directional Response	Cardioid
	Frequency Response	150Hz - 10500Hz
	Sensitivity	49.5dB+ 2dB @ 1kHz
	Impedance	1.6KΩ+ 3-% @ 1kHz

Physical Data

Dimensions	Height – 14.38” Width - 3.80” Depth - 6.02”
Finish	Powder Coated Silver Sparkle



STS-SU2

Staff Pod

The combined microphone and speaker unit that has an adjustable neck that can be either free standing or surface mounted.



Technical Data

Speaker	RMS	5W
	Impedance	4Ω
	Output	SPL 1W @ 1M 85dB
	Frequency Response	150Hz - 10300Hz
Microphone	Directional Response	Cardioid
	Frequency Response	150Hz - 10500Hz
	Sensitivity	49.5dB+ 2dB @ 1kHz
	Impedance	1.6KΩ+ 3-% @ 1kHz

Physical Data

Dimensions	Speaker Pod Diameter – 4.30" Height – 14.38"
------------	----------------------------------------------------

STS-BL0

Customer Speaker and Microphone
(Non-Ballistic Rated)

The Customer Speaker and Microphone with window mount kit is installed directly into windows that have a hole in the glass 2.5" to 4" in diameter to overcome communication barriers caused by a glass window between a staff and customer.



Technical Data

Speaker	RMS	5W
	Impedance	4Ω
	Output	SPL 1W @ 1M 85dB
	Frequency Response	150Hz - 10300Hz
Microphone	Directional Response	Omni-Directional
	Frequency Response	100Hz - 10,000Hz
	Sensitivity	-44dB+ 3dB @ 1kHz
	Impedance	1.0K +/- 30%

Physical Data

Dimensions	Diameter – 5.51" Depth – 4.84"
------------	-----------------------------------

STS-BL3

Customer Speaker and Microphone
(Level 3 UL 752 Ballistic Rated)

The Customer Speaker and Microphone with window mount kit is installed directly into windows that have a hole in the glass 2.5" to 4" in diameter to overcome communication barriers caused by a glass window between a staff and customer.

Technical Data

Speaker	RMS	5W
	Impedance	4Ω
	Output	SPL 1W @ 1M 85dB
	Frequency Response	150Hz - 10300Hz
Microphone	Directional Response	Omni-Directional
	Frequency Response	100Hz - 10,000Hz
	Sensitivity	-44dB+ 3dB @ 1kHz
	Impedance	1.0K +/- 30%



Physical Data

Dimensions	Diameter – 5.51" Depth – 4.84"
------------	-----------------------------------

STS-BL8

Customer Speaker and Microphone
(Level 8 UL 752 Ballistic Rated)

The Customer Speaker and Microphone with window mount kit is installed directly into windows that have a hole in the glass 2.5" to 4" in diameter to overcome communication barriers caused by a glass window between a staff and customer.

Technical Data

Speaker	RMS	5W
	Impedance	4Ω
	Output	SPL 1W @ 1M 85dB
	Frequency Response	150Hz - 10300Hz
Microphone	Directional Response	Omni-Directional
	Frequency Response	100Hz - 10,000Hz
	Sensitivity	-44dB+ 3dB @ 1kHz
	Impedance	1.0K +/- 30%



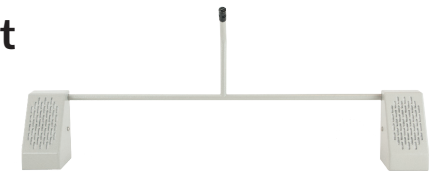
Physical Data

Dimensions	Diameter – 5.51" Depth – 4.84"
------------	-----------------------------------

STS-B80

Bridge Bar Customer Unit

A combined speaker and microphone bridge bar unit, designed for the customer side. The directional microphone makes this ideal for environments with high ambient noise levels. The unit fits well on counters with pass through trays.



Technical Data

Speaker	RMS	5W
	Impedance	4Ω
	Output	SPL 1W @ 1M 85dB
	Frequency Response	150Hz - 11000Hz
Microphone	Directional Response	Cardioid
	Frequency Response	70Hz - 14000Hz
	Sensitivity	-67dB ± 3dB @ 1KHz
	Impedance	1.6KΩ =/- 30% @ 1KHz

Physical Data

Dimensions	Height – 8.63” Width – 24.25” Depth – 2.93”
Weight	3.0lbs
Construction	Mild Steel
Finish	Grey Leatherette Black Textured

Product Codes

Bridge Bar Customer Unit in Grey	STS-B80-G
Bridge Bar Customer Unit in Black	STS-B80-B

STS-B90

Slimline Bridge Bar Unit

The slimline stainless steel bridge bar unit with a combined speaker and screen mounted microphone designed for the customer side. The directional microphone makes this ideal for environments with high ambient noise levels.



Technical Data

Speaker	RMS	5W
	Impedance	4Ω
	Output	SPL 1W @ 1M 85dB
	Frequency Response	150Hz - 11000Hz
Microphone	Directional Response	Cardioid
	Frequency Response	70Hz - 14000Hz
	Sensitivity	-47dB ± 3dB @ 1KHz
	Impedance	680Ω =/- 1KHz

Physical Data

Dimensions	Height – 16.9” Width – 22.8” Depth – 2.36”
Weight	1.44lbs
Construction	Mild Steel
Finish	Brushed Stainless Steel

STS-B94 Half Bridge Bar Unit

A half bridge bar speaker and directional microphone module with a curved stem for counters with reduced space.



Physical Data

Dimensions	Height – 9.44"
	Width – 11.02"
	Depth – 5.11"
Weight	1.67lbs
Construction	Mild Steel
Finish	Grey Leatherette
	Black Textured

Technical Data

Speaker	RMS	5W
	Impedance	4Ω
	Output	SPL 1W @ 1M 85dB
	Frequency Response	150Hz - 11000Hz
Microphone	Directional Response	Cardioid
	Frequency Response	70Hz - 14000Hz
	Sensitivity	-67dB ± 3dB @ 1KHz
	Impedance	1.6KΩ =/- 30% @ 1KHz

Product Codes

Curved Left Unit in Grey	STS-B94-LH-G
Curved Left Unit in Black	STS-B94-LH-B
Curved Right Unit in Grey	STS-B94-RH-G
Curved Right Unit in Black	STS-B94-RH-B

STS-K009-IP Call Box

The surface mounted call unit features a call button on the front to inform staff of a customer's presence and open a handsfree conversation channel. It has an LED light to help users find the system when it is dark outside. The IP55 rating ensures that it is suited for outdoor environments offering protection against water, dust and dirt ingress.



Technical Data

Speaker	Rated Power Input	5W
	Impedance	4Ω
	Sensitivity	SPL 1W @ 1M 84dB
	Frequency Response	100Hz - 20,000Hz
Microphone	Directional Response	Omnidirectional
	Frequency Response	100Hz - 20,000Hz
	Sensitivity	-42dB ± 3dB @ 1KHz
	Impedance	2.2K

Physical Data

Dimensions	Width – 4.9"
	Depth – 2.6"
	Height – 7.2"
	Cable length - 8.3ft
Weight	2.8lbs
Construction	Stainless Steel, Polycarbonate
Finish	Black Power Coated

MIC-M14-000-SS

Window Mounted
Microphone

A customer side window mounted directional microphone. The directional microphone makes this ideal for environments with high ambient noise levels.

This microphone is included in the STS-K020 Window Intercom Kit and available with a bent or straight stem.



Technical Data

Directional Response	Cardioid
Frequency Response	70Hz - 10300Hz
Sensitivity	-47dB ± 3dB @ 1KHz
Impedance	680Ω +/- @ 1KHz

Physical Data

Dimensions	Depth - 1.08" Diameter - 1.19"
Weight	0.19lbs
Construction	Aluminum
Finish	Silver Anodised

STS-M14-BENT

Window Mounted
Microphone with Bent Stem

A customer side window mounted directional microphone with a bent stem.

This microphone is included in the STS-K072 Window Intercom Kit with a black powder coated stem and in the STS-K058 Window Intercom Kit with a grey powder coated stem.

The microphone mounts to the window with an adhesive pad and the stem is intalled to the counter with provided screws and screw covers.



Technical Data

Directional Response	Cardioid
Frequency Response	70Hz - 10,300Hz
Sensitivity	-47dB ± 3dB @ 1KHz
Impedance	680Ω +/- @ 1KHz

Physical Data

Dimensions	Depth - 1.08" Diameter - 1.19" Stem - 11.8"
Weight	0.41lbs
Construction	Aluminium
Finish	Grey or Black Power Coated

MIC-M14-300

Window Mounted Microphone with Stem

A customer side window mounted directional microphone with a 11.8 inch stem. This microphone is included in the STS-K064 Window Intercom Kit. It can be installed as a drop down from the STS-S23 Overhead Speaker or from the side or bottom of a window with the D bracket accessory.

If you need additional length, the STS-M14-300-EX can be added to the stem to give an additional 15.75 inches.



Technical Data

Directional Response	Cardioid
Frequency Response	70Hz - 10300Hz
Sensitivity	-47dB ± 3dB @ 1KHz
Impedance	680Ω +/- @ 1KHz

Physical Data

Dimensions	Depth - 1.08" Diameter - 1.19" Length - 13.0"
Weight	0.36lbs
Construction	Aluminum
Finish	Silver Anodised

STS-M14-300-EX

Window Mounted Microphone Extender

This extender is 15.75 inches and for use with the STS-M14-300 microphone to give additional stem length when installing onto larger windows.

It can be cut to length during installation.



Physical Data

Dimensions	Stem - 15.75"
Weight	1.10lbs
Construction	Aluminium
Finish	RAL 9006 Powdercoat Semi Gloss

MIC-M15-300-IP

IP54 Rated Stem Microphone

IP54 rated microphone fully designed to be installed outdoors, able to withstand harsh weather conditions and environments. The microphone offers protection against water, dust and dirt ingress.

This microphone is included in the STS-K080-IP Window Intercom Kit.



Technical Data

Directional Response	Omni-Directional
Frequency Response	100Hz - 20,000Hz
Sensitivity	-42 dB \pm 3 dB (0dB=1V/pa)
Impedance	2.2K

Physical Data

Dimensions	Diameter – 1.41" Depth – 0.47" Stem - 11.8"
Construction	ABS Plastic and Stainless Steel
Finish	Black Powder Coat

MIC-M300

Gooseneck Microphone

A free-standing directional microphone for the staff side, with a flexible gooseneck and round base.



Technical Data

Directional Response	Cardioid
Frequency Response	150Hz - 10,500Hz
Sensitivity	49.5dB+ 2dB @ 1kHz (0dB=1V/pa)
Impedance	1.6K Ω + 3-% @ 1kHz

Physical Data

Dimensions	Base – 2.74" Height – 13.38"
Weight	2.05lbs
Construction	Mild Steel
Finish	Grey Semi Gloss

STS-M54

Surface Mounted Microphone

This customer side surface mounted microphone is featured in the STS-K002 Window Intercom Kit. It is an omni-directional microphone making it suitable for environments with low to moderate ambient noise. It's available in both Grey and Black finishes.



Technical Data

Directional Response	Omni-Directional
Frequency Response	100Hz - 5000Hz
Sensitivity	-42.5 ± 2.0dB @ 1KHz (0dB=1V/pa)
Impedance	2KΩ +/- @ 1KHz

Physical Data

Dimensions	Height – 4.26" Width – 2.37" Depth – 2.93"
Weight	S60 - 1.23lbs; M54 - 1.04llbs
Construction	Mild Steel
Finish	Grey Leatherette Black Textured

Product Codes

Surface Mic in Grey	STS-M54-G
Surface Mic in Black	STS-M54-B

STS-M56

Flush Microphone

This customer side flush mounted microphone is featured in the STS-K003 Window Intercom Kit. It is an omni-directional microphone making it suitable for environments with low to moderate ambient noise.



Physical Data

Dimensions	Height – 1.97" Width – 2.56" Depth – 4.72"
Weight	1.04llbs
Construction	Mild Steel
Finish	Grey Leatherette Black Textured

Technical Data

Directional Response	Omni-Directional
Frequency Response	100Hz - 5000Hz
Sensitivity	-42.5 ± 2.0dB @ 1KHz (0dB=1V/pa)
Impedance	2KΩ +/- @ 1KHz

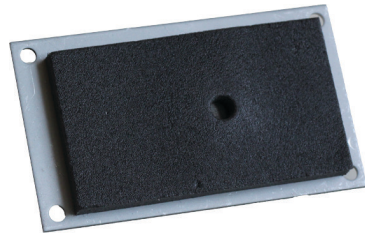
Product Codes

Flush Mic in Grey	STS-M56-G
Flush Mic in Black	STS-M56-B

STS-M56-B-NG

Integrated Customer Microphone

The customer side integrated microphone is designed for integration into deal drawers, deal trays, frames or similar applications. The microphone, with mounting plates, is built for simple and seamless installation



Physical Data

Dimensions	Height – 1.85” Width – 3.25” Depth – 0.70”
Weight	0.19lbs
Construction	Mild Steel
Finish	Powder Coated Grey

Technical Data

Directional Response	Omni-Directional
Frequency Response	100Hz - 5000Hz
Sensitivity	-42.5 ± 2.0dB @ 1KHz (0dB=1V/pa)
Impedance	2KΩ +/- @ 1KHz

STS-C100 / STS-C200

Glass Mounted Microphone with Poly Plates

This customer side microphone with glass mount kit comes with two polycarbonate plates, two grey gaskets, the STS-M14-000-SS microphone, hardware and a 3’ piece of tubing. It is featured in the STS-K020 Window Intercom Kit. Two size options are available, the C100 accommodates a 4” hole in the glass and the C200 can accommodate a 5” hole in the glass.



Product Codes

Retrofit Kit to accommodate 4” hole	STS-C100
Retrofit Kit to accommodate 5” hole	STS-C200

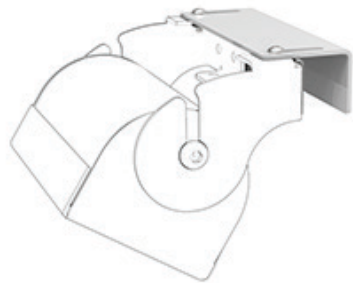
Technical Data

Directional Response	Cardioid
Frequency Response	70Hz - 10300Hz
Sensitivity	-47dB ± 3dB @ 1KHz
Impedance	680Ω +/- @ 1KHz

STS-S23-BRKT

Single Clamp Bracket for the STS-S23 Overhead Speaker

This clamp bracket can be adhered to a freestanding glass or safety partition and similar screens where the top of the glass is exposed. The clamp is adjustable between 2-20mm to accommodate a range of glass thicknesses. Hardware and adhesive pads are included to secure the bracket to required surfaces.



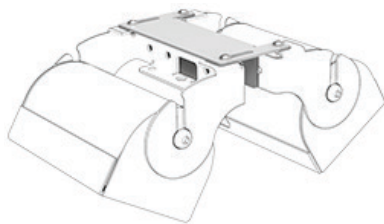
Physical Data

Dimensions	Height – 0.98" Width – 3.77" Depth – 1.02"
Construction	Mild Steel
Finish	RAL 9006 Powder Coated Semi Gloss

STS-S23-BRKT-C

Dual Clamp Bracket for the STS-S23 Overhead Speaker

The Dual Clamping Bracket allows for two STS-S23 Overhead Speakers to be adhered to a freestanding glass or safety partition and similar screens where the top of the glass is exposed. The clamp is adjustable between 2-20mm to accommodate a range of glass thicknesses. Hardware and adhesive pads are included to secure the bracket to required surfaces.



Physical Data

Dimensions	Height – 0.98" Width – 3.77" Depth – 1.92"
Construction	Mild Steel
Finish	RAL 9006 Powder Coated Semi Gloss

STS-S23

Overhead Speaker

An overhead sealed speaker module designed to be fitted above either the staff or customer side counters.

This speaker is featured in the STS-K020 and STS-K064 Window Intercom Kits.

Single and dual mounting brackets are available for installation.



Technical Data

RMS	5W
Impedance	4Ω
Output	SPL 1W @ 1M 85dB
Frequency Response	150Hz - 10300Hz

Physical Data

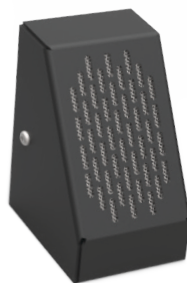
Speaker Dimensions	Height – 3.26" Width – 4.01" Depth – 3.54"
Weight	1.12 lbs
Construction	Mild Steel
Finish	Powder Coated RAL9006 Semi Gloss

STS-S60

Surface Speaker

Customer side, free-standing speaker available in both Grey and Black finishes.

This speaker is featured in the STS-K002 and STS-K058 Window Intercom Kits.



Technical Data

RMS	5W
Impedance	4Ω
Output	SPL 1W @ 1M 85dB
Frequency Response	150Hz - 10300Hz

Physical Data

Dimensions	Height – 4.26" Width – 2.37" Depth – 2.93"
Weight	1.23lbs
Construction	Mild Steel
Finish	Grey Leatherette Black Textured

Product Codes

Surface Speaker in Grey	STS-S60-G
Surface Speaker in Black	STS-S60-B

STS-S61

Flush Speaker

Customer side, flush mounted speaker available in both Grey and Black finishes. This speaker is featured in the STS-K003 Window Intercom Kit.



Technical Data

RMS	5W
Impedance	4Ω
Output	SPL 1W @ 1M 85dB
Frequency Response	150Hz - 10300Hz

Product Codes

Flush Speaker in Grey	STS-S61-G
Flush Speaker in Black	STS-S61-B

Physical Data

Dimensions	Height – 1.97” Width – 2.56” Depth – 4.72”
Weight	1.23lbs
Construction	Mild Steel
Finish	Grey Leatherette Black Textured

STS-S61-B-NG

Integrated Customer Speaker

The customer side integrated speaker is designed for integration into deal drawers, deal trays, frames or similar applications. The speaker, with mounting plates, is built for simple and seamless installation.



Technical Data

RMS	5W
Impedance	4Ω
Output	SPL 1W @ 1M 85dB
Frequency Response	150Hz - 10300Hz

Product Codes

Flush Speaker in Grey	STS-S61-G
Flush Speaker in Black	STS-S61-B

Physical Data

Dimensions	Height – 1.85” Width – 3.50” Depth – 1.25”
Weight	0.40lbs
Construction	Mild Steel
Finish	Powder Coated Black

STS-S70

Speaker Pod

A speaker pod can be either free standing or surface mounted. It is included in the STS-K070 and STS-K071 Window Intercom kits.

Mounting the speaker pod to a counter or surface can be done with an adhesive pad or by screwing the base in place with provided mounting holes.



Technical Data

RMS	5W
Impedence	4Ω
Frequency Response	150Hz - 10300Hz
Output	SPL 1W @ 1M 85dB

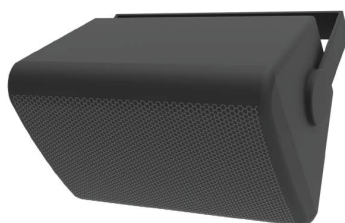
Physical Data

Dimensions	Diameter – 4.30" Height – 1.50"
Finish	Black RAL 9005
Construction	ABS Plastic

STS-S80-IP

IP54 Rated Overhead Speaker

The STS-S80-IP is an overhead IP54 rated speaker fully designed to be installed outdoors, able to withstand harsh weather conditions and environments. The speaker offers protection against water, dust and dirt ingress.



Technical Data

RMS	30W
Impedance	8 Ω
Output	SPL 1W @ 1M 88dB
Frequency Response	120Hz - 20,000Hz

Physical Data

Dimensions	Height – 4.17" Width – 6.02" Depth – 4.17"
Weight	1.98lbs
Construction	Plastic and Metal
Finish	Matt Black

IL-AE97

Supaloop Aerial

The hearing loop aerial is built into the blue loop sign. It comes with an adhsvie pad and metal stand for mounting.

Suitable for mounting on safety screens, grocery check-out lanes, vertical surfaces on counters at banks or customer service stations.



Physical Data

Dimensions	Height - 8.07" Width - 8.07" Depth - 0.21" Connection Cable Length - 78.74"
Weight	0.44lbs
Construction	Various
Finish	Various

IL-AE98

Window Mounted Hearing Loop Aerial

The Window Mounted Hearing Loop Aerial comes with a hearing loop sticker, IL-AE96 loop aerial and a back sticker. The front facing sticker with the ear logo has adhesive on the front, and is designed to be installed from the staff side. The IL-AE96 is to be installed between the front and rear sticker to the counter's window.



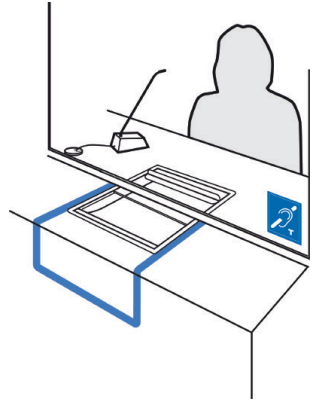
Physical Data

Dimensions	Height - 8.50" Width - 8.50" Connection Cable Length - 6.5ft
Weight	0.26lbs
Construction	Various
Finish	Various

IL-AE99

Under the Counter
Hearing Loop Aerial

The IL-AE99 Under the Counter Hearing Loop Aerial is flexible and can be moulded under the counter in the configuraion as seen in the image. It can be installed with self adhesive clips, P-clips or hot glue. When connected to the STS-A31H Window Intercom Amplifier, it transmits a magnetic field which enables the telecoil in the user's hearing instrument to receive the signal.



Physical Data

Dimensions	Can be moulded to desired size/ shape Wire length - 72" Wire diameter - 0.15"
Weight	0.22lbs
Construction	Copper Wire with Black Protective Covering
Finish	Black PVC

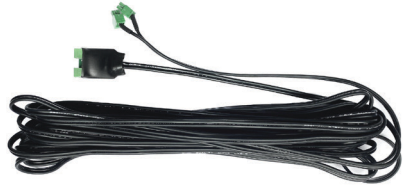


STS-EX

Extension Cables

The Window Intercom System Extension Cables enables the staff and customer speaker and/or microphone components to be installed up to 65.6 ft from the STS-A31H Window Intercom System Amplifier.

The extension cables are available in four different lengths.



Technical Data

Connector 1	x2 Female Euroblock .35cm
Connector 2	x2 Male Euroblock .35cm

Product Codes

5 Meter Cable (16.4ft)	STS-EX-5
10 Meter Cable (32.8ft)	STS-EX-10
15 Meter Cable (49.2ft)	STS-EX-15
20 Meter Cable (65.6ft)	STS-EX-20

STS-SJB

Break Out Box

The Break Out Box (BOB) is an accessory that can be used with any Window Intercom System that allows a staff to wear a headset. It can be used in addition to or as a replacement to the staff side speaker and microphone. The BOB is a good solution to environments with high ambient noise and where there are many windows next to each other.

The BOB is available in two models for headsets with 3.5mm connection and RJ11 connections.

Features

- Push button mute switch
- Headset connection
- Compact
- Easy to install



STS-SJB-3.5



STS-SJB-RJ11

Technical Data

Connections	Break Out Box (RJ11 Connection)	
	Headset Loudspeaker(s) and Microphone – B.O.B. Headphones and Microphone	RJ11 Connection
	Break Out Box (3.5mm Connection)	
	Headset Microphone – B.O.B. Microphone	3.5mm TRS Connection
	Headset Loudspeaker(s) – B.O.B. Headphones	3.5mm TRS Connection
	Break Out Box (3.5mm Jack & RJ11 Connection)	
	B.O.B. Microphone (Grey Sleeve) – STS-A31	2 pin Euro-block Connector
	B.O.B. loudspeaker (Black Sleeve) – STS-A31	2 pin Euro-block Connector
	Staff Unit – B.O.B. MIC	2 pin Euro-block Connector
	Staff Unit – B.O.B. SPKR	2 pin Euro-block Connector

Physical Data

Dimensions	Height – 0.80"
	Width – 3.80"
	Depth – 1.58"
Weight	0.23lbs
Construction	ABS Plastic
Finish	Black

Product Codes

Break Out Box (3.5mm)	STS-SJB-3.5
Break Out Box (RJ11 Connection)	STS-SJB-RJ11

HEADSET-1-RJ11 / HEADSET-1-3.5mm

1 Ear Headset and Microphone

This one ear monoaural headset has a built-in noise cancelling boom microphone. It is compatible with our Break Out Box [STS-SJB].

Technical Data (Microphone)

Pattern	Electret
Impedance	Max. 3.9KΩ
Sensitivity	-43 ± 3dB @ 1KHz
Frequency Range	100-10kHz



Technical Data (Speaker)

Pattern	Dynamic moving coil
Impedance	150Ω / 300Ω
Sound Pressure	94±3dB / 91±3dB at 1kHz
Sound Intensity	80mW / 40mW
Frequency Range	300-3.4 kHz

Physical Data

Weight	0.10lbs
--------	---------

HEADSET-2-RJ11 / HEADSET-2-3.5mm

2 Ear Headset and Microphone

This two ear binaural headset has a built-in noise cancelling boom microphone. It is compatible with our Break Out Box [STS-SJB].

Technical Data (Microphone)

Pattern	Electret
Impedance	Max. 3.9KΩ
Sensitivity	-43 ± 3dB @ 1KHz
Frequency Range	100-10kHz



Technical Data (Speaker)

Pattern	Dynamic moving coil
Impedance	150Ω / 300Ω
Sound Pressure	94±3dB / 91±3dB at 1kHz
Sound Intensity	80mW / 40mW
Frequency Range	300-3.4 kHz

Physical Data

Weight	0.14 lbs
--------	----------

HEADSET-1-DECT

Wireless 1 Ear Headset and Microphone

This mono headset with docking station can be used with the STS-SJB-RJ11 Break Out Box to allow staff hands free communication with any of our Window Intercom Systems.



Technical Data (Microphone)

TX Power	20dBm(100mW)
Sensitivity	-44 ± 3dB @ 1KHz
Frequency Range	10Hz~10kHz

Technical Data (Speaker)

Impedance	20ø speaker element; 32Ω
Frequency Range	300Hz~7000Hz @1kHz

HEADSET-2-DECT

Wireless 2 Ear Headset and Microphone

This mono headset with docking station can be used with the STS-SJB-RJ11 Break Out Box to allow staff hands free communication with any of our Window Intercom Systems.



Technical Data (Microphone)

TX Power	20dBm (100mW)
Sensitivity	-51 ± 3dB @ 1KHz
Frequency Range	10Hz-10kHz

Technical Data (Speaker)

Impedance	20ø speaker element; 32Ω
Frequency Range	300Hz~7000Hz @1kHz

PS-55

Power Supply

The PS-55 Power Supply is a Level 6 power supply for use with the STS-A31H Window Intercom Amplifier.

Complies with UL, RCM, KC, FCC, CE (EMC), and CCC standards.



Physical Data

Dimensions	Height - 3.66"
	Width - 1.93"
	Depth - 1.42"
	Cable Length - 70.87"
Weight	0.39lbs
Construction	ABS Plastic

Technical Data

Input	100-240V - 50-60Hz
Output	14V 2.14A 30W max

Specification

All of our Window Intercom System product specifications can be found on the ARCAT website: <https://arcat.com/company/contacta-inc-54234>



AIA Continuing Education Program

Contacta partners with the American Institute of Architects (AIA) and Ron Blank/Green CE to sponsor continuing education courses for Architects.

Course Name: GCON10A - Clear Communication: Inclusive Window Intercom Systems



Contact us

Phone: (616) 392-3400

Email: sales@contactainc.com

Technical Support: sts.support@contactainc.com

For product sheets and installation guides and videos, visit us online at <https://contactainc.com>



Contact us:

☎ 1 (616) 392-3400
✉ sales@contactainc.com
📠 1 (855) 250-5667

Contacta, Inc
4025 Tampa Road Suite 1107A
Oldsmar, FL 34677
United States

www.contactainc.com